



SNOW PLOW POLICY

Revised 1-12-2016

Street Priority Levels:

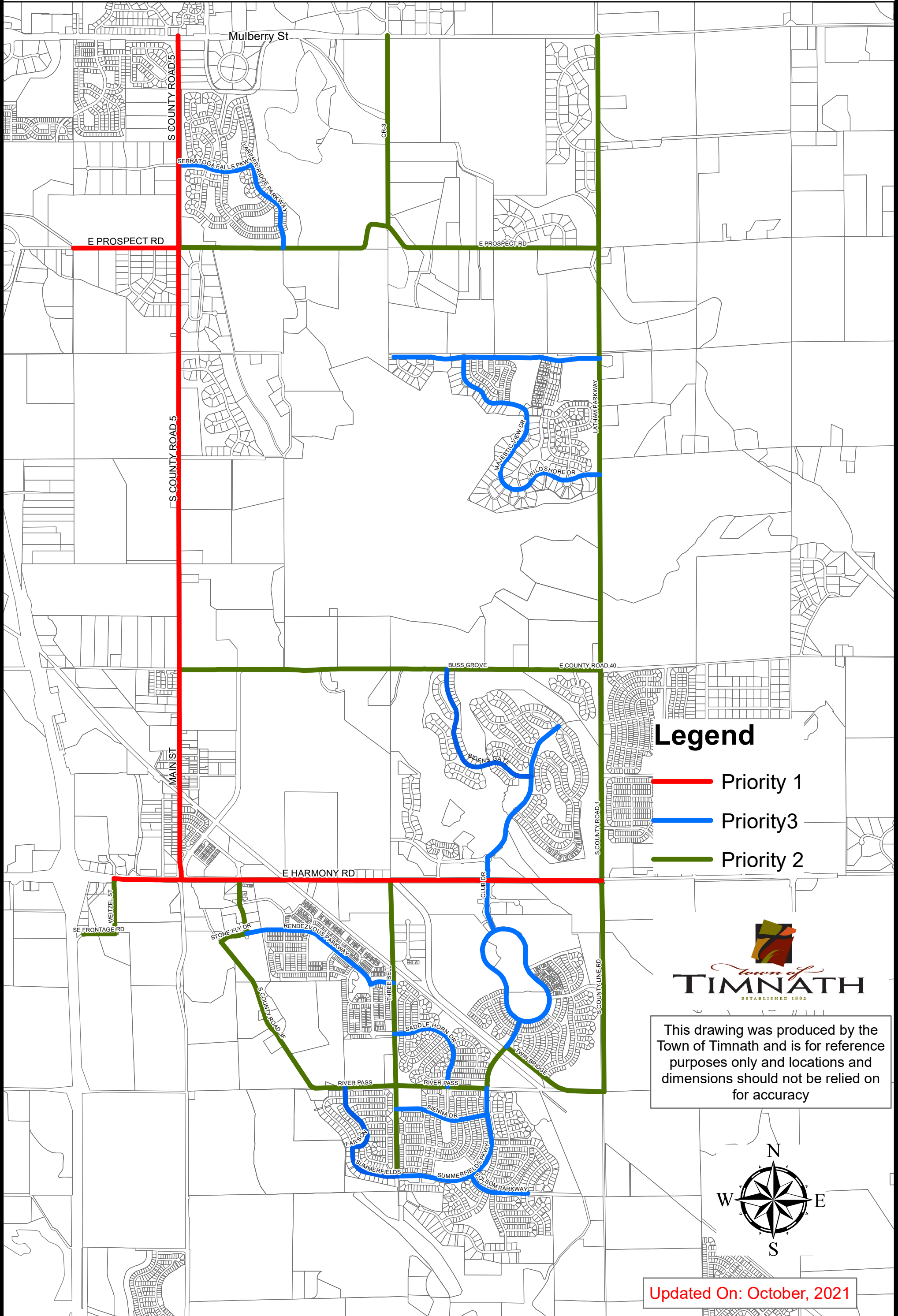
- Priority 1 – Primary Arterial Streets. These streets are considered to be the minimum network which must be kept open to provide a transportation system connecting hospitals, fire stations, police stations, and emergency response units. Collectively, Priority 1 streets make up the Snow Emergency Route.
- Priority 2 – All remaining Arterial streets and select Collector streets completing the network covering the major traffic volume streets.
- Priority 3 – All remaining Collector streets through neighborhoods.

The Town plows Priority 1-3 streets, working their way as time allows from Priority 1, then 2, then 3. Priority 3 streets are usually not plowed until the storm is done and staff has caught up. The heavier the snowfall, the more time that is required to keep Priority 1 streets open so the longer it takes to get to Priority 2 streets and ultimately Priority 3 streets.

Local streets which are primarily located in residential areas are not typically plowed by jurisdictions in northern Colorado, including the Town of Timnath. Most subdivisions in Timnath are governed by a Metropolitan District and/or a Home Owners Association. These entities are allowed by the town to contract with licensed and bonded private snow removal companies to plow local streets if warranted.

In addition, if the Town plows snow in front of a driveway or mailbox cluster, the Town does not clear them. It is up to the property owner to clear their driveway. The Town's primary duty is to clear and maintain the Priority 1-3 designated snow routes.

Snow Plow Policy

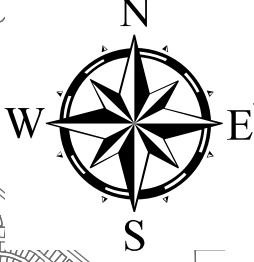


Legend

- Priority 1
- Priority 3
- Priority 2



This drawing was produced by the Town of Timnath and is for reference purposes only and locations and dimensions should not be relied on for accuracy



Updated On: October, 2021

