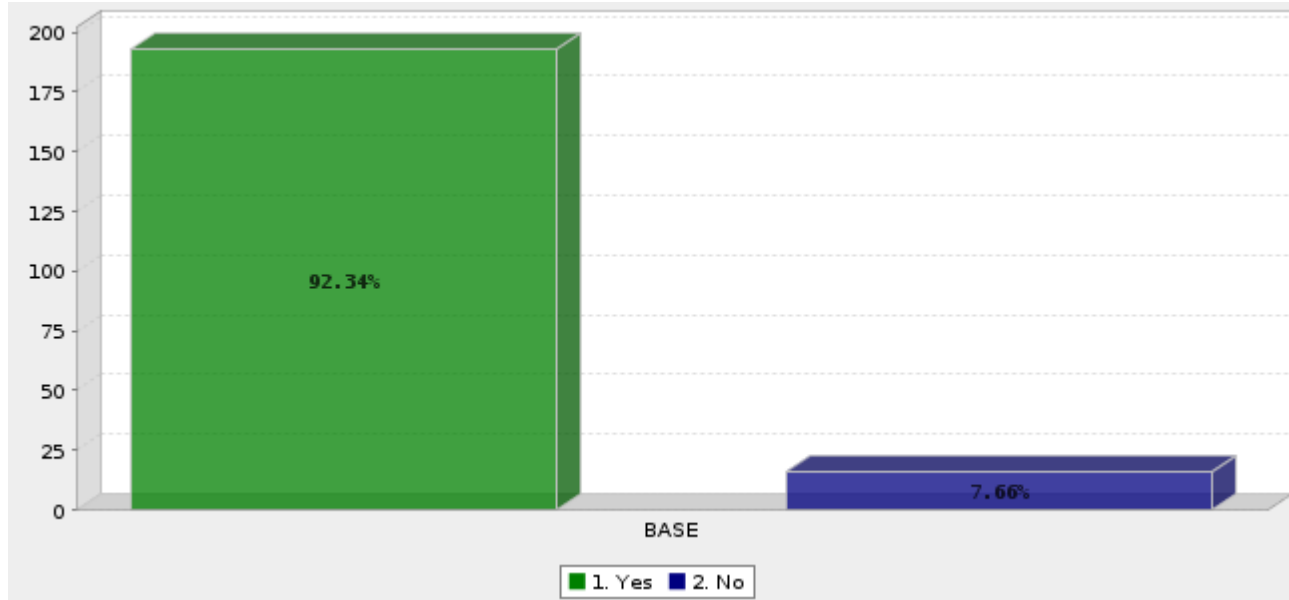


2016 Timnath Programming Survey 10/26

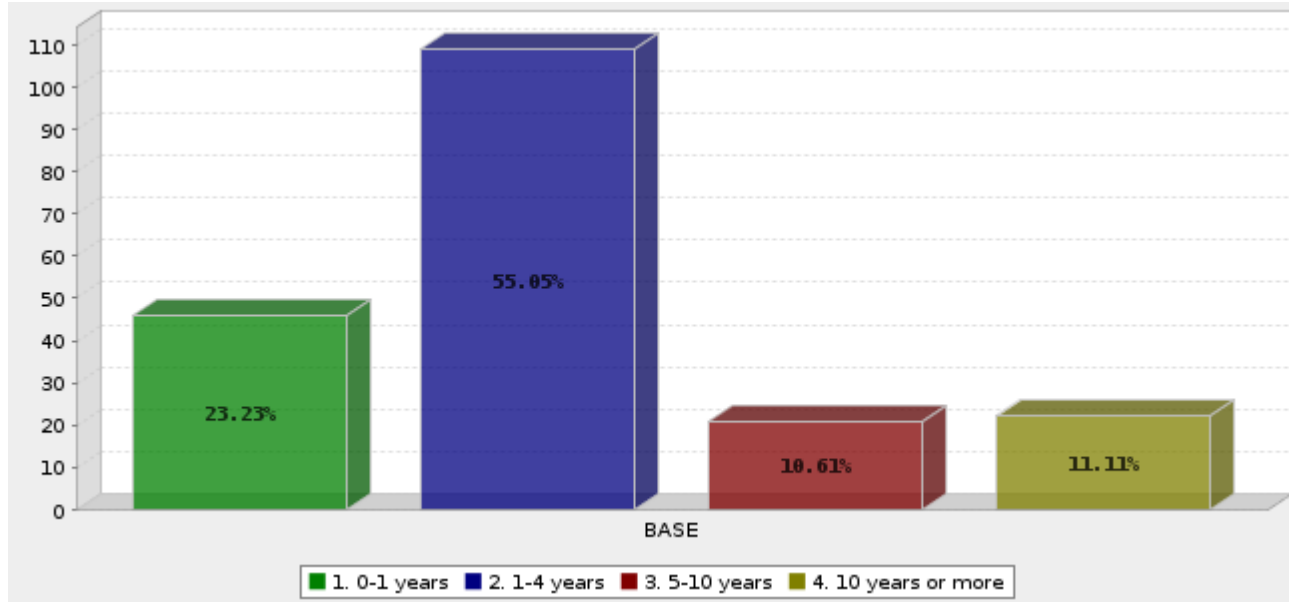
Q1. Are you a resident of Timnath?



	Answer	Count	Percent	
	1. Yes	193	92.34%	
	2. No	16	7.66%	
	Total	209	100%	

Mean : 1.077	Confidence Interval @ 95% : [1.040 - 1.113]	Standard Deviation : 0.267	Standard Error : 0.018
------------------------	--	-----------------------------------	----------------------------------

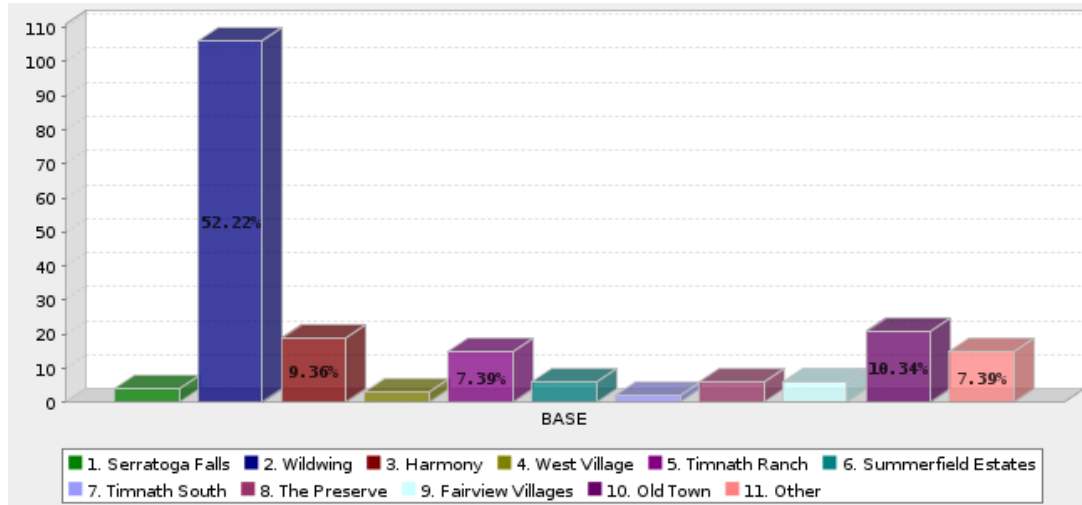
Q2. How long have you been a Timnath resident?



	Answer	Count	Percent	
1.	0-1 years	46	23.23%	
2.	1-4 years	109	55.05%	
3.	5-10 years	21	10.61%	
4.	10 years or more	22	11.11%	
	Total	198	100%	

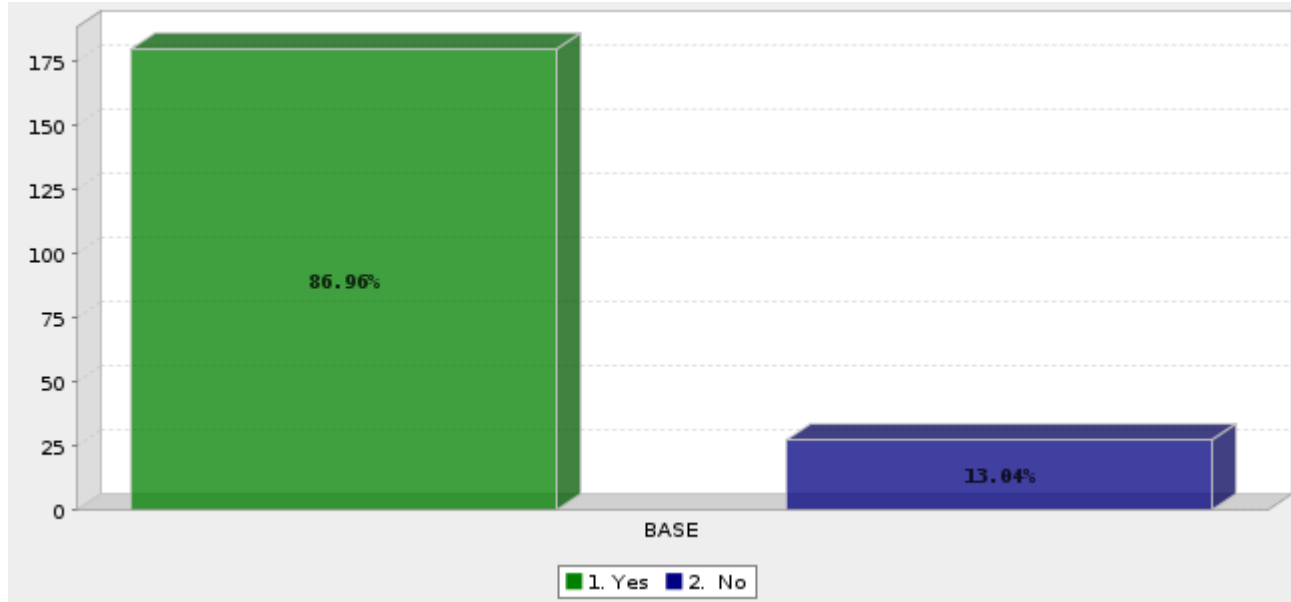
Mean : 2.096	Confidence Interval @ 95% : [1.973 - 2.219]	Standard Deviation : 0.882	Standard Error : 0.063
-------------------------------	--	-----------------------------------	-------------------------------

Q3. Which subdivision of Timnath do you reside in?



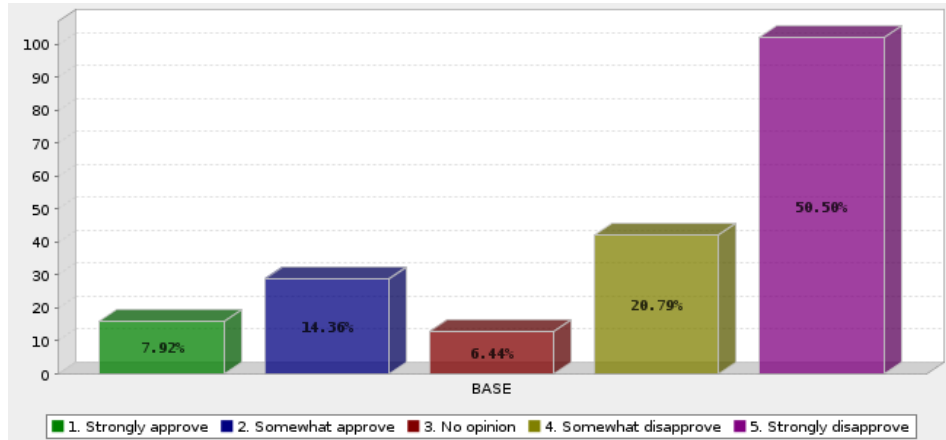
	Answer	Count	Percent
1.	Serratoga Falls	4	1.97%
2.	Wildwing	106	52.22%
3.	Harmony	19	9.36%
4.	West Village	3	1.48%
5.	Timnath Ranch	15	7.39%
6.	Summerfield Estates	6	2.96%
7.	Timnath South	2	0.99%
8.	The Preserve	6	2.96%
9.	Fairview Villages	6	2.96%
10.	Old Town	21	10.34%
11.	Other	15	7.39%
	Total	203	100%

Q4. Were you aware that the Timnath Reservoir is only accessible to Timnath Residents?



	Answer	Count	Percent	
	1. Yes	180	86.96%	
	2. No	27	13.04%	
	Total	207	100%	
Mean :	Confidence Interval @ 95% : [1.084 -		Standard Deviation : 0.338	Standard Error :
1.130	1.176]			0.023

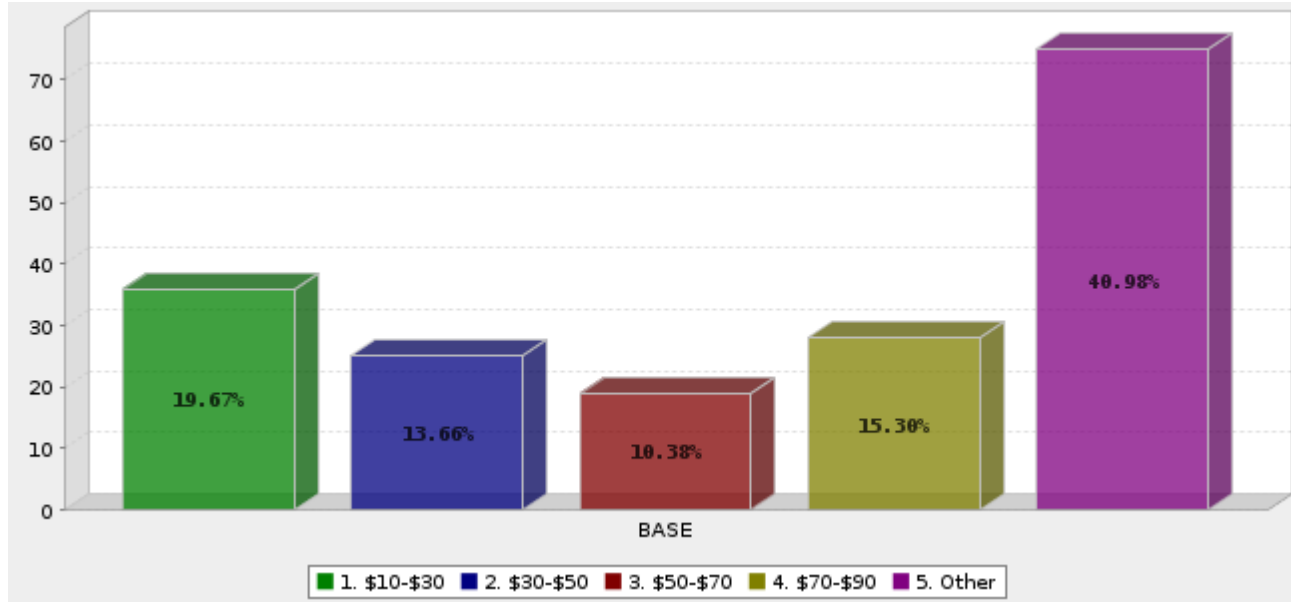
Q5. If charged a fee, to what degree would you approve of opening Timnath Reservoir to use by non-Timnath residents in a limited capacity (shore-use only)?



	Answer	Count	Percent
1.	Strongly approve	16	7.92%
2.	Somewhat approve	29	14.36%
3.	No opinion	13	6.44%
4.	Somewhat disapprove	42	20.79%
5.	Strongly disapprove	102	50.50%
	Total	202	100%

Mean :	Confidence Interval @ 95% :	Standard Deviation :	Standard Error :
3.916	[3.728 - 4.104]	1.363	0.096

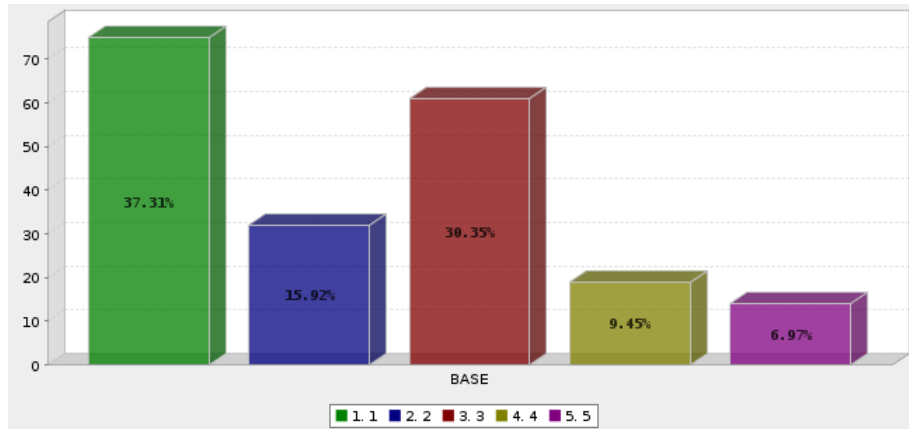
Q6. If a shore-use pass for non-Timnath residents is approved, how much should it cost?



	Answer	Count	Percent	
1.	\$10-\$30	36	19.67%	
2.	\$30-\$50	25	13.66%	
3.	\$50-\$70	19	10.38%	
4.	\$70-\$90	28	15.30%	
5.	Other	75	40.98%	
	Total	183	100%	

Mean : 3.443	Confidence Interval @ 95% : [3.212 - 3.673]	Standard Deviation : 1.592	Standard Error : 0.118
-------------------------------	--	-----------------------------------	---

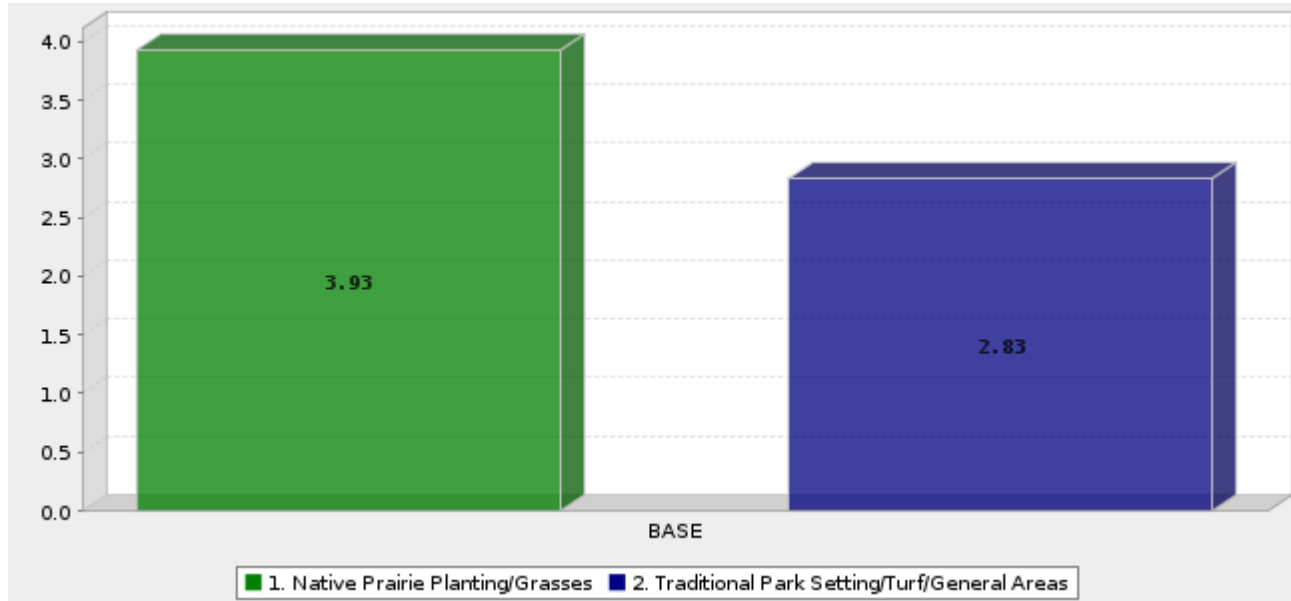
Q7 Design Direction. Please indicate what design direction you would like to see at the reservoir on a scale of 1 to 5 with 1 being more native setting (passive, minimal impact, few structures, soft access pathways, naturalistic landscape/meadow/prairie), 5 being more of a developed setting (larger impact footprint, increased water use, sports complex, lighting, active and sports oriented), and 3 being more of a blended setting (increased impact, medium, medium water use, some structures, soft and hard access pathways, some sporting facilities, no lighting).



	Answer	Count	Percent
1.	1	75	37.31%
2.	2	32	15.92%
3.	3	61	30.35%
4.	4	19	9.45%
5.	5	14	6.97%
	Total	201	100%

Mean :	Confidence Interval @ 95% :	Standard Deviation :	Standard Error :
2.328	[2.154 - 2.502]	1.258	0.089

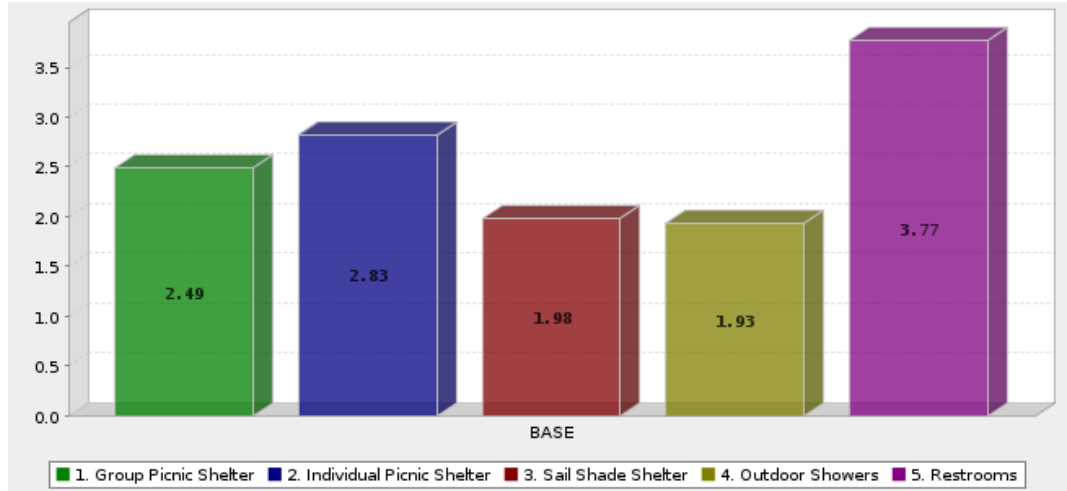
Q8 Landscaping. Please indicate for the following series of questions on a scale from 1 to 5 (1 being not important and 5 being very important), your preference of how important each of the elements/activities are for you at the reservoir.



Q8 Landscaping. Overall Matrix Scorecard : Please indicate for the following series of questions on a scale from 1 to 5 (1 being not important and 5 being very important), your preference of how important each of the elements/activities are for you at the reservoir.

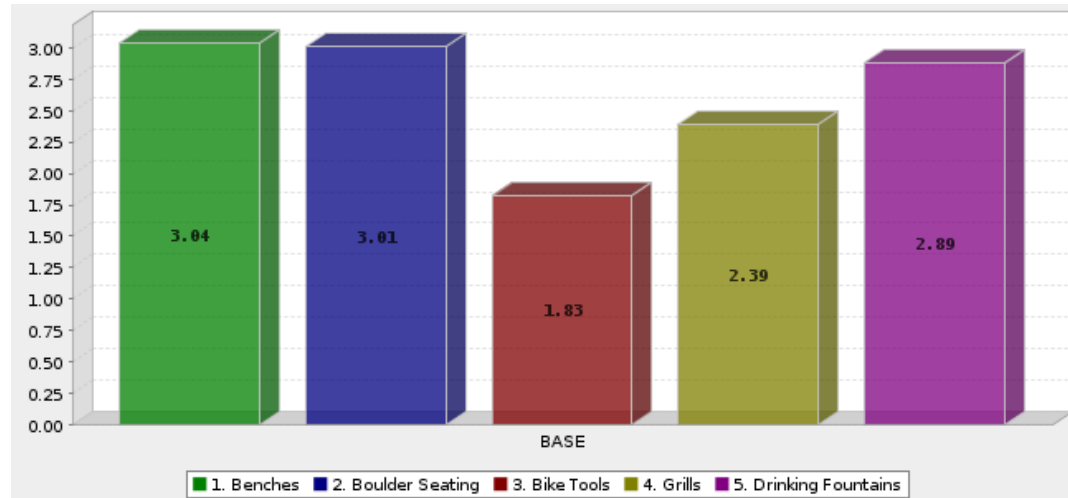
Question	Count	Score
1. Native Prairie Planting/Grasses	197	3.929
2. Traditional Park Setting/Turf/General Areas	199	2.829
Average		3.379

Q9 Site Structures. Please indicate for the following series of questions on a scale from 1 to 5 (1 being not important and 5 being very important), your preference of how important each of the elements/activities are for you at the reservoir.



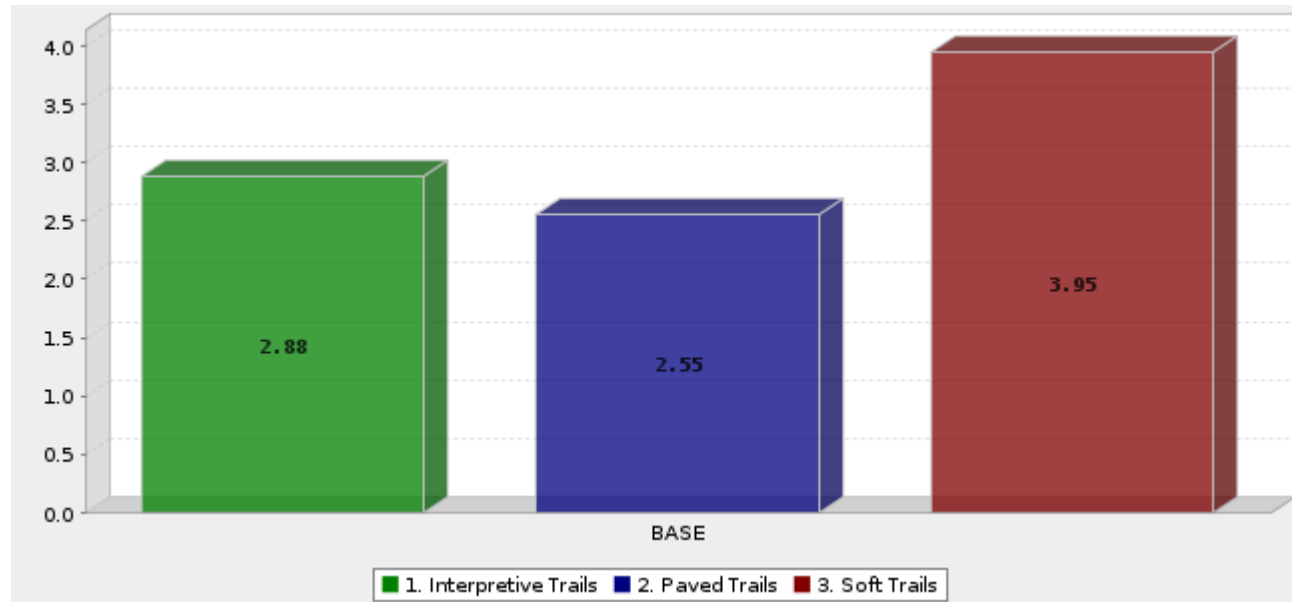
Question	Count	Score	
1. Group Picnic Shelter	192	2.490	
2. Individual Picnic Shelter	197	2.827	
3. Sail Shade Shelter	191	1.979	
4. Outdoor Showers	194	1.933	
5. Restrooms	197	3.772	
Average		2.600	

Q10 Site Furnishings. Please indicate for the following series of questions on a scale from 1 to 5 (1 being not important and 5 being very important), your preference of how important each of the elements/activities are for you at the reservoir.



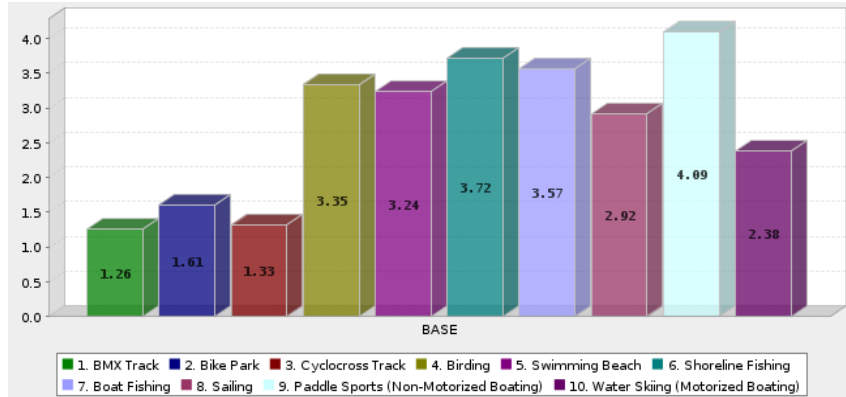
	Question	Count	Score	
1.	Benches	195	3.041	
2.	Boulder Seating	195	3.010	
3.	Bike Tools	193	1.829	
4.	Grills	194	2.392	
5.	Drinking Fountains	192	2.885	
		Average	2.631	

Q11 Pathways. Please indicate for the following series of questions on a scale from 1 to 5 (1 being not important and 5 being very important), your preference of how important each of the elements/activities are for you at the reservoir.



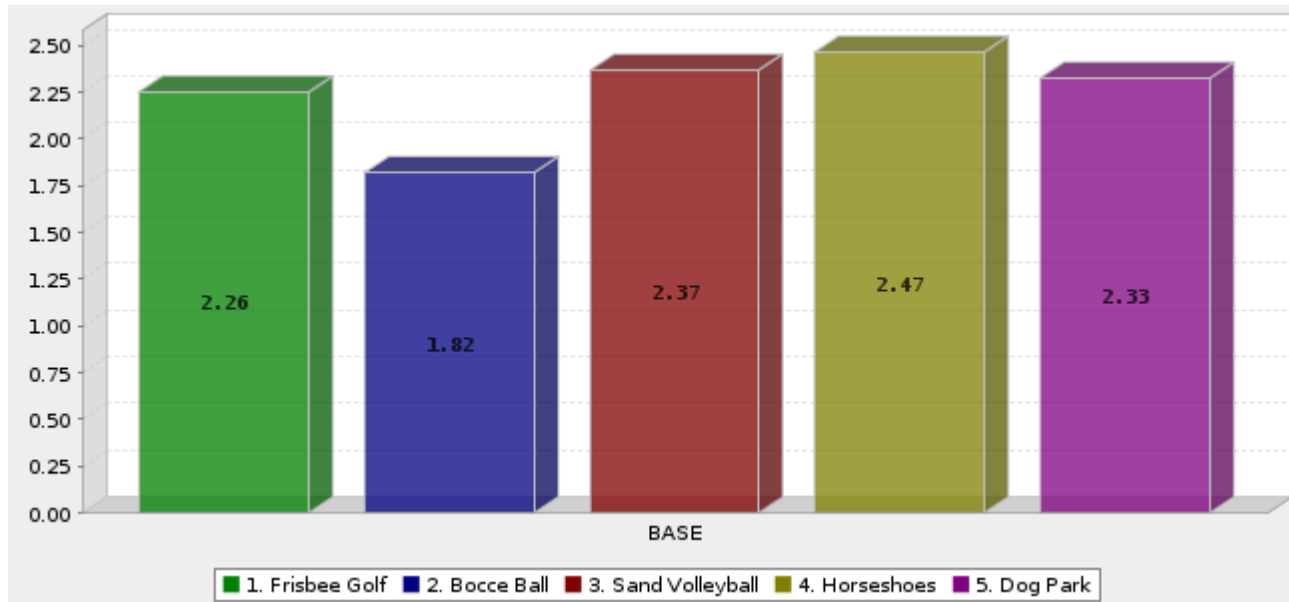
	Question	Count	Score	
1.	Interpretive Trails	193	2.881	
2.	Paved Trails	194	2.552	
3.	Soft Trails	193	3.948	
		Average	3.127	

Q12 Special Use Areas. Please indicate for the following series of questions on a scale from 1 to 5 (1 being not important and 5 being very important), your preference of how important each of the elements/activities are for you at the reservoir.



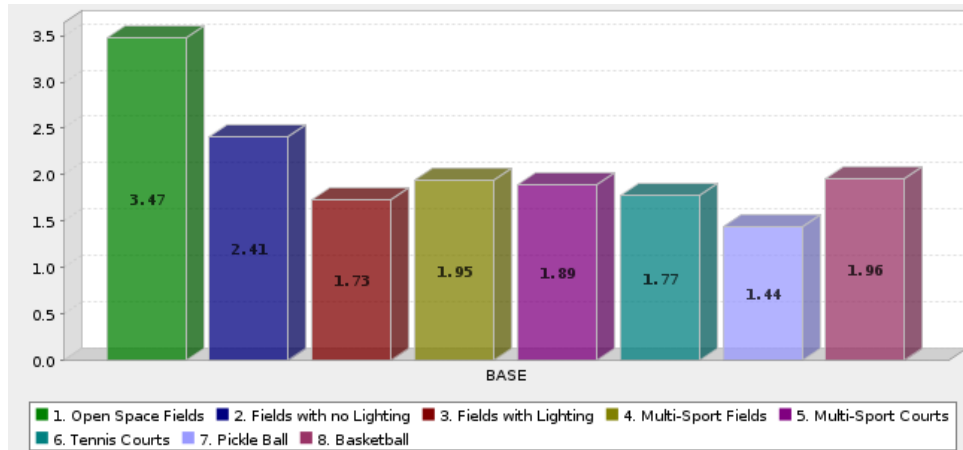
	Question	Count	Score
1.	BMX Track	191	1.257
2.	Bike Park	191	1.613
3.	Cyclocross Track	190	1.326
4.	Birding	191	3.346
5.	Swimming Beach	191	3.236
6.	Shoreline Fishing	192	3.724
7.	Boat Fishing	189	3.566
8.	Sailing	184	2.918
9.	Paddle Sports (Non-Motorized Boating)	193	4.093
10.	Water Skiing (Motorized Boating)	192	2.380
		Average	2.746

Q13 Low Impact Activities. Please indicate for the following series of questions on a scale from 1 to 5 (1 being not important and 5 being very important), your preference of how important each of the elements/activities are for you at the reservoir.



	Question	Count	Score	
1.	Frisbee Golf	192	2.255	
2.	Bocce Ball	192	1.818	
3.	Sand Volleyball	193	2.368	
4.	Horseshoes	191	2.466	
5.	Dog Park	193	2.326	
		Average	2.247	

Q14 Traditional Sports. Please indicate for the following series of questions on a scale from 1 to 5 (1 being not important and 5 being very important), your preference of how important each of the elements/activities are for you at the reservoir.



	Question	Count	Score	
1.	Open Space Fields	188	3.473	
2.	Fields with no Lighting	188	2.410	
3.	Fields with Lighting	180	1.733	
4.	Multi-Sport Fields	191	1.948	
5.	Multi-Sport Courts	188	1.894	
6.	Tennis Courts	185	1.773	
7.	Pickle Ball	189	1.444	
8.	Basketball	191	1.958	
	Average		2.079	